

EMFACE Submentum: Human Fat Histology

Histologic and Clinical Evaluation of HIFES and Sync RF+ Technology on Submental Subcutaneous Adipose Tissue

David Goldberg M.D., J.D.¹

1. Skin Laser and Surgery Specialists, a Division of Schweiger Dermatology, Hackensack, NJ; Icahn School of Medicine at Mt. Sinai, New York, NY, USA

Presented at: Annual Conference of the American Society for Laser Medicine and Surgery; April 11, 2024; Baltimore, Maryland, USA

Highlights

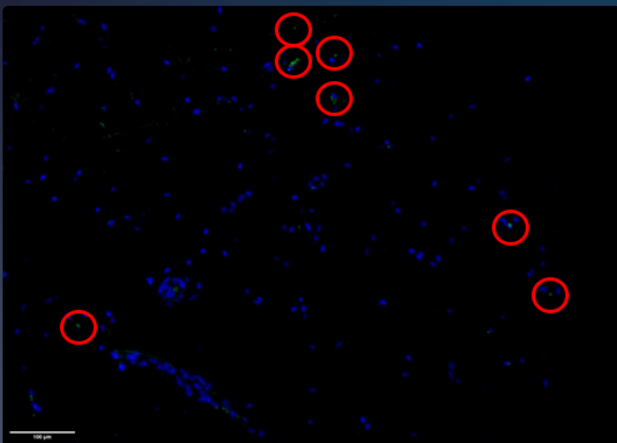
- Eight subjects divided into two groups
 - Group A (Active): Six subjects underwent one 20-minute EMFACE Submentum (Sync RF+ & HIFES) treatment
 - Group B (Control): Two subjects did not receive any treatment
- Biopsy samples collected at baseline, 24 hours, and 7 days reveal:
 - Post-treatment adipocytes were reduced in size
 - There were no signs of necrosis
- No changes in control group



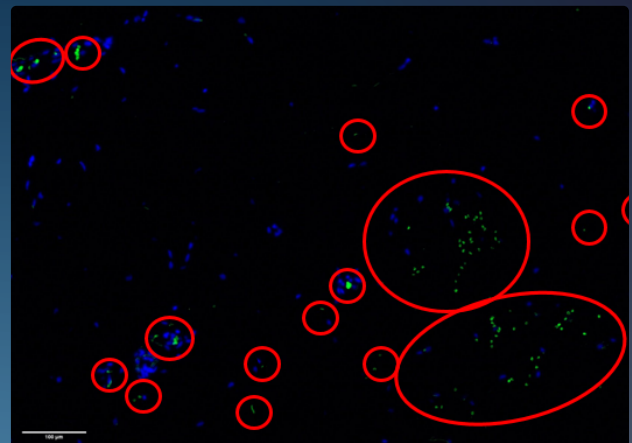
5x Increase in Apoptotic Activity

Visualization of cells undergoing apoptosis

Baseline



24 Hours



Immunofluorescence showed increase in proapoptotic protein Caspase-7 (green dots) after therapy