

EMFACE Submentum: Animal Skin Histology

Histological Evaluation of Tissue Response to Simultaneous HIFES and Sync RF+ Technology

Chris W. Robb M.D., Ph.D, FAAD¹; Jan Bernardy DVM²; Rea Jarosova MSc²

1. Skin & Allergy Center, Spring Hill, TN, USA
2. Veterinary Research Institute, Brno, Czech Republic

Highlights

- Six large white pigs divided into two groups
 - Group A (Active): Five pigs underwent four 20-minute EMFACE Submentum (Sync RF+ & HIFES) treatment
 - Group B (Control): One pig did not receive any treatment
- Biopsy collected at baseline, 1 month, and 2 months
 - Post-treatment biopsies have demonstrated positive changes in targeted tissue
- No changes in control group

+33% Collagen content Increase

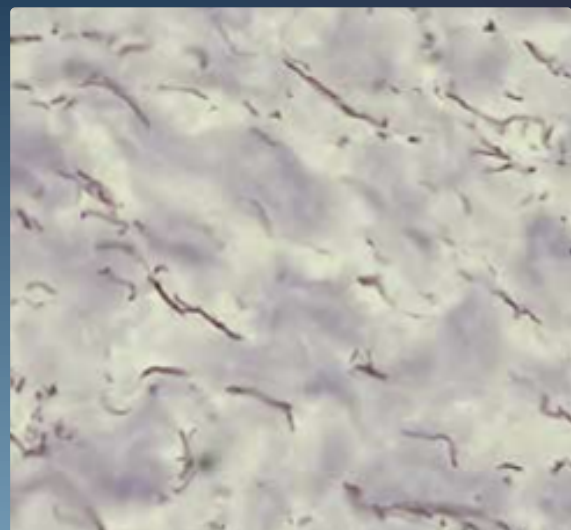
+113% Elastin content Increase

Visible improvement of skin structure

Baseline



2 Months



The image, after two months, shows an increased number and length of elastin fibers, which are colored black