

# EMFACE Submentum: Animal Fat Histology

## Submental Contouring with HIFES and Synchronized RF+ Technology: Porcine Model Study

Chris W. Robb M.D., Ph.D, FAAD<sup>1</sup>; Jan Bernardy DVM<sup>2</sup>; Rea Jarosova MSc<sup>2</sup>

1. Skin & Allergy Center, Spring Hill, TN, USA  
2. Veterinary Research Institute, Brno, Czech Republic

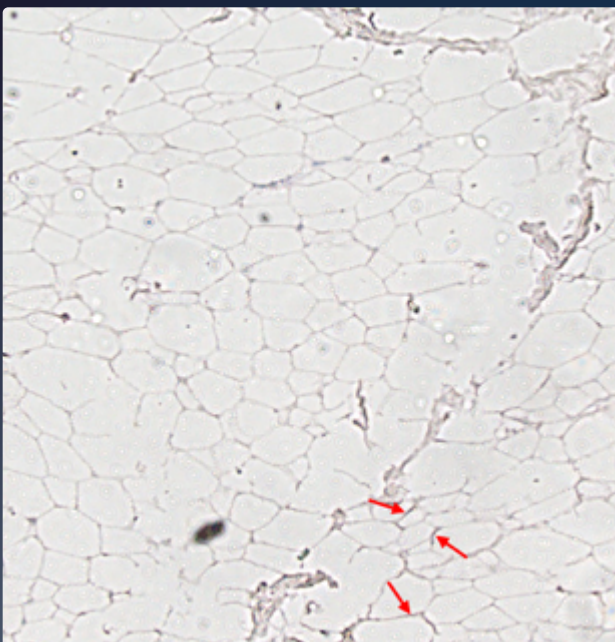
### Highlights

- Six large white pigs divided into two groups
  - Group A (Active): Five pigs underwent one 20-minute EMFACE Submentum (Sync RF+ & HIFES) treatment
  - Group B (Control): One pig did not receive any treatment
- Biopsy samples collected at baseline, 1 hour, 24 hours, and 7 days
  - Post-treatment biopsies have demonstrated positive changes in targeted tissue
- No changes in control group

**4.8x** Increase in Apoptotic Activity

### Apoptosis increased post-treatment

Baseline



After 6H



Red arrows represent activated apoptosis indicator Caspase-3